

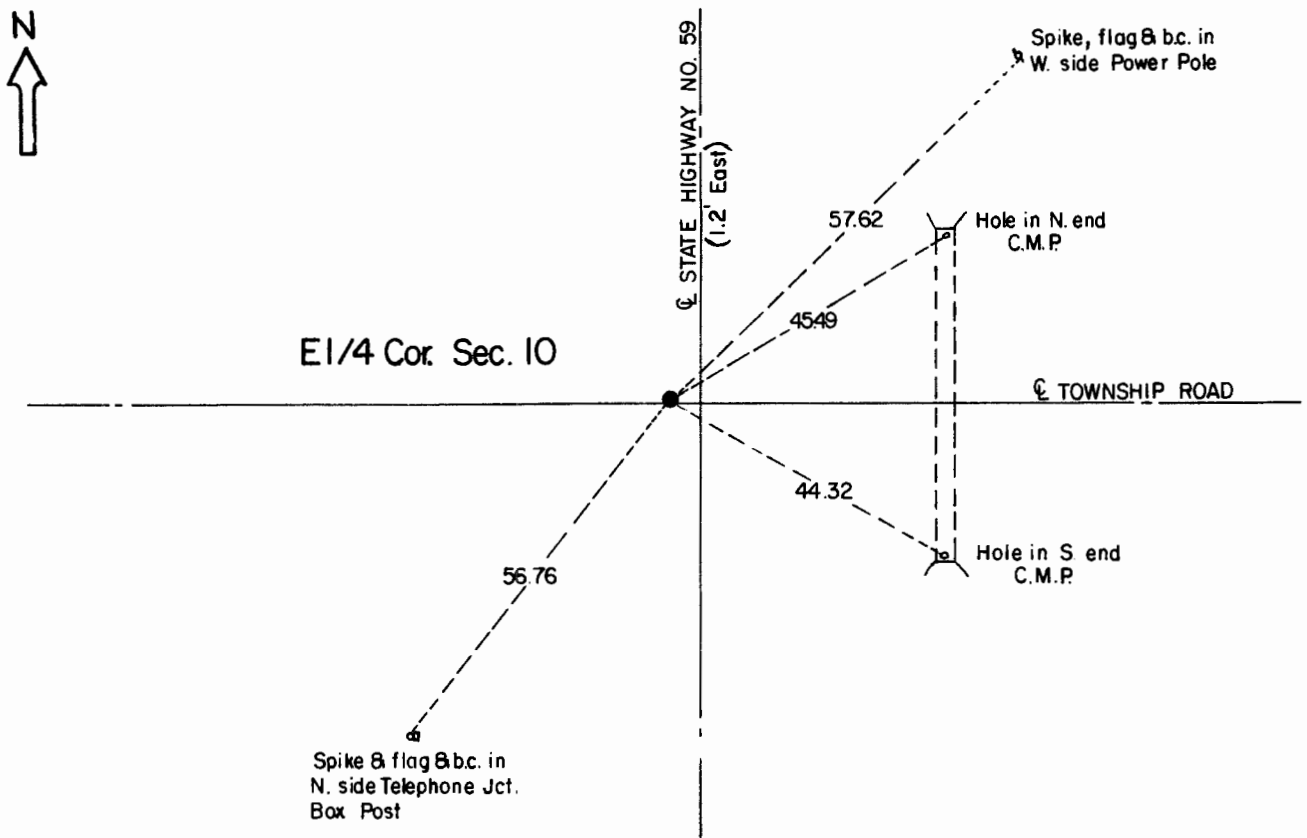
CERTIFICATE OF LOCATION OF GOVERNMENT CORNER

East Quarter Corner of Section **10** , Township **107** , Range **41** 5th P.M.

STATE OF MINNESOTA, County of Murray.

Statement: Aug. 22, 1989 - Found a brass rod in old concrete pavement placed by the Minnesota Department of Highways in 1932.

SKETCH OF REFERENCE TIES



Statement of evidence relative to this corner location is on the back of page.

I hereby certify that this document and the data contained herein was prepared by me or under my direct supervision and that I am a duly Registered Land Surveyor under the laws of the State of Minnesota.

Duane A. Bonnema Nov 6, 1989
 Duane A. Bonnema Date

Minnesota Registration No. 14895

OFFICE OF THE COUNTY RECORDER
 COUNTY OF MURRAY

NOV 15 1989

I hereby certify that this document was filed in the County Recorder's office at ___ M. on the ___ day of _____ A.D., 19__

County Recorder *[Signature]*
 By _____, Deputy
 DOCUMENT NO. _____

East Quarter Cor. Sec. 10 T107N-R41W

Statement:

- August 1861* *Original Government Land Office Surveyor L. G. M. Fletcher records in his field notes, "built mound with trench pits, charred stake, per instructions."*
- July 6, 1901* *J. W. Woolstencroft, County Surveyor, records in the County Surveyor's Record Book, page 138, that he measured to the Corner and that there was a "Guide post on corner."*
- 1932* *The Minnesota Highway Department shows in their field notes that they have a P.I. at the "1/4 Cor". They also record, "Brass Plug Inp" over a "pointed field stone".*
- Aug. 22, 1989* *Duane A. Bonnema, L.S. Reg. No. 14895, removed 4 inches of asphalt pavement and found the 3/4 inch brass plug which was drilled into the old concrete pavement surface by the Minnesota Department of Highways in 1931. The concrete road surface below contains an abundance of reinforcing rod which hampers searching for the "Guide Post" noted in 1901, or the "pointed stone" noted by the Highway Department in 1932.*